



# GMT MONTHLY MEMBERSHIP PROGRESS REPORT

Results as of: 8/31/2018

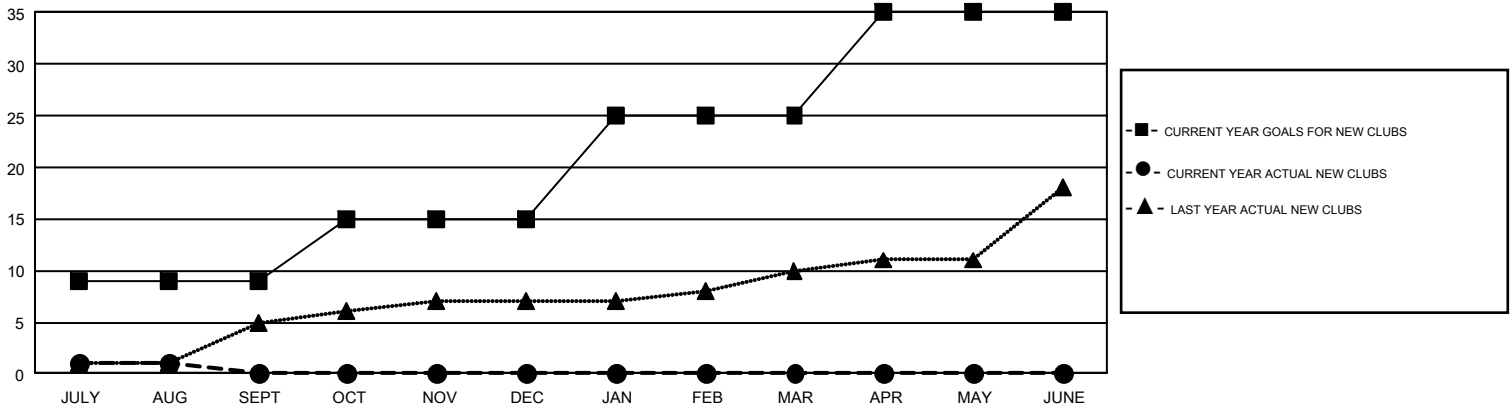
## GMT Constitutional Area 1, Group B

GMT: CINDY GREGG

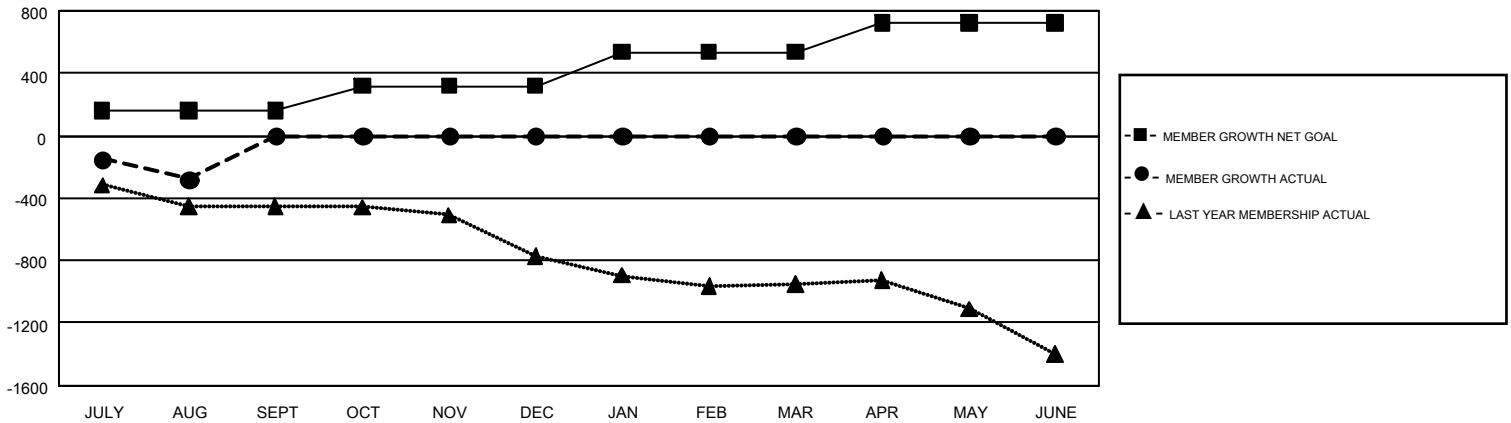
REPORT DOES NOT INCLUDE CLUBS IN UNDISTRICTED AREAS.

Clubs				Members			
RESULTS FOR 2018-2019				RESULTS FOR 2018-2019			
QUARTER	NEW CLUB GOAL	NEW CLUBS	DROPPED CLUBS	QUARTER	MEMBER GROWTH NET GOAL	MEMBER GROWTH ACTUAL	DROPPED MEMBERS ACTUAL (including transfers)
JULY/AUG/SEPT	9	1	13	JULY/AUG/SEPT	163	405	610
OCT/NOV/DEC	6	0	0	OCT/NOV/DEC	157	0	0
JAN/FEB/MAR	10	0	0	JAN/FEB/MAR	218	0	0
APR/MAY/JUNE	10	0	0	APR/MAY/JUNE	188	0	0

GOALS AND ACTUAL NEW CLUBS CUMULATIVE



GOALS AND ACTUAL MEMBERS CUMULATIVE



DROPPED CLUBS: 13	200 CLUBS OF 1,528 ADDED 1 OR MORE NEW MEMBERS	<b>GENDER DISTRIBUTION</b> MALE                    29,146 (71.43%) FEMALE                 11,659 (28.57%)
<b>DROPPED MEMBERS</b> DECEASED                    115 CLUB CANCELLED               35 OTHER                            458 <hr/> TOTAL                            608	<a href="#">CLICK HERE FOR CUMULATIVE MEMBERSHIP DATA</a>	TOTAL FAMILY UNIT MEMBERS                    7,977  FAMILY MEMBERS PAYING HALF DUES                    4,087